

Private and Confidential

Mrs Julie Harris
Orchard House Surgery
South William Street
Workington
Cumbria
CA14 2ED

Improving Practice Questionnaire Report

Orchard House Surgery

November 2015



1 Northleigh House
Thorverton Road
Matford Business Park
Exeter
EX2 8HF

Mrs Julie Harris
Orchard House Surgery
South William Street
Workington
Cumbria
CA14 2ED

t 01392 823766
f 01392 824767

e enquiries@cfepsurveys.co.uk
w www.cfepsurveys.co.uk

25 November 2015

Dear Mrs Harris

This report outlines your patient feedback from the Improving Practice Questionnaire (IPQ). Your results have been illustrated in tables and graphs with associated benchmarks where applicable. Details of score calculation and statistical methods have been provided to help you in the interpretation and understanding of your results. You will also receive an A4 poster summarising your results and a certificate of completion which you may like to display to patients to indicate that you value their views in order to inform positive change within your practice.

A guidance template for discussion of these local survey findings and an action plan have also been included which may help facilitate discussions with your patient reference group (PRG).

The format of this report has been updated, which we hope will provide you with a clearer picture of performance.

We hope these results give you useful feedback as to how patients rated the practice and its service, and provide you with a basis for reflection. In order to enable us to improve our services we would be grateful if you could complete a feedback form using the following link:

<http://www.cfepsurveys.co.uk/questionnaires/feedback/default.aspx?psid=187509>

Please contact the office on 01392 823766 or reports@cfepsurveys.co.uk if you require further information about your report.

Yours sincerely

CFEP UK Reports Team

Report Contents

Introduction

Your patient feedback

Distribution and frequency of ratings (table 1)	P1
Your mean percentage scores and benchmarks from all participating practices (table 2, graph 1)	P2
Your mean percentage scores and benchmarks by practice list size (table 3, graph 2)	P3
Your patient demographics (table 4)	P4
Your current and previous mean percentage scores (table 5)	P5
Your patient comments	P6

Supporting documents

Details of score calculation
Explanation of quartiles
Page by page guide to the interpretation of your report
Sample questionnaire

Introduction

About the IPQ

The IPQ is a well-established questionnaire widely used in the UK.

Since 2004, over 3,000,000 patients have completed an IPQ providing valuable patient feedback to over 4,000 practices and over 16,000 health practitioners, many of these practices and health practitioners having completed the survey on more than one occasion.

Extensive published validation studies have established that the IPQ is a reliable and sensitive tool: accurately measuring patient satisfaction in designated areas and is sensitive to change - if the IPQ is carried out on more than one occasion any change in patient perception of service can be clearly and reliably monitored.

This report outlines the feedback that has been collected and analysed from a sample of your patients. Full explanation on how to interpret this information can be found in the report. We hope that this feedback is useful and a basis for reflection.

A sample of the IPQ questionnaire is included at the end of this report for reference.

About the benchmarks

Benchmarks are a useful guide as to how your practice performed in relation to all the practices who have carried out an IPQ survey. Benchmark data provided relates to either all practices or according to practice list size (the practice list size benchmarks displayed in this report are representative of your practice), as we have established this plays a part in scores achieved. However, it should be noted that other factors such as geographical location and clinical setting may also affect scores and benchmarks may not always be truly representative. Furthermore as it is not mandatory for a practice to carry out an IPQ survey, benchmarks provided are effectively based on data collected from a *volunteer* sample. Volunteer samples often perform better than an 'average' sample which could make the benchmarks provided artificially high.

Your feedback

From the report you will be able to clearly pinpoint areas where you scored well and also those areas where you might feel that improvements may be needed. However, it is advisable to take time to assimilate all the feedback and to avoid scanning the report and noting specific scores on which too much emphasis can be placed. In fact, the clearest reflection of patient satisfaction can often be seen in the frequency and distribution of patient ratings and in their written comments.

A page by page guide to the interpretation of your report has been incorporated in the supporting documentation at the end of this report which you may find useful.

Other useful information

Together with your report you will receive:

- An A4 poster: to enable you to share the results of your local survey with the patients in your practice.
- A 'Guidance template for discussion of local findings and action plan' to help you reflect on the survey results.

Your patient feedback

Your patient feedback

Table 1: Distribution and frequency of ratings, questions 1-28

Question	Poor	Fair	Good	Very Good	Excellent	Blank/spoilt
Q1 Opening hours satisfaction	3	12	84	64	31	1
Q2 Telephone access	8	17	80	57	30	3
Q3 Appointment satisfaction	7	30	73	55	29	1
Q4 See practitioner within 48hrs	36	63	56	25	9	6
Q5 See practitioner of choice	31	58	56	35	12	3
Q6 Speak to practitioner on phone	14	27	72	42	16	24
Q7 Comfort of waiting room	0	16	69	69	38	3
Q8 Waiting time	14	61	64	34	12	10
Q9 Satisfaction with visit	2	9	68	63	49	4
Q10 Warmth of greeting	3	9	68	67	48	0
Q11 Ability to listen	3	12	64	64	51	1
Q12 Explanations	2	13	68	57	51	4
Q13 Reassurance	2	13	67	61	47	5
Q14 Confidence in ability	2	11	62	59	58	3
Q15 Express concerns/fears	2	15	59	70	38	11
Q16 Respect shown	1	10	52	76	52	4
Q17 Time for visit	2	21	58	65	45	4
Q18 Consideration	1	11	74	56	40	13
Q19 Concern for patient	2	12	72	60	40	9
Q20 Self care	1	13	68	58	41	14
Q21 Recommendation	2	12	58	66	47	10
Q22 Reception staff	1	11	44	71	59	9
Q23 Respect for privacy/confidentiality	1	9	59	64	53	9
Q24 Information of services	1	14	57	63	43	17
Q25 Complaints/compliments	2	23	66	54	28	22
Q26 Illness prevention	1	16	68	64	25	21
Q27 Reminder systems	3	19	67	51	35	20
Q28 Second opinion / comp medicine	2	16	62	49	23	43

Blank/spoilt responses are not included in the analysis (see score explanation)

Your patient feedback

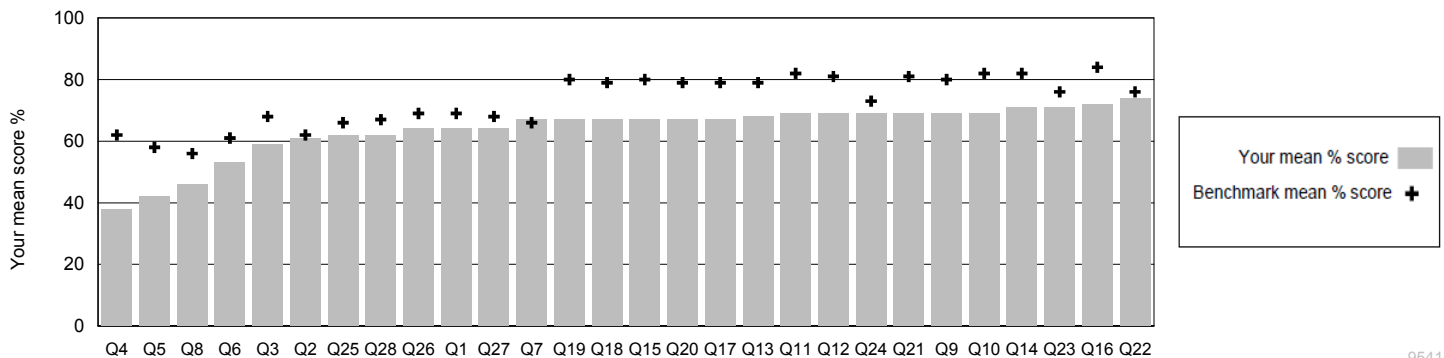
Table 2: Your mean percentage scores and benchmarks from all participating practices

	Your mean score (%)	Benchmark data (%)*					
		National mean score (%)	Min	Lower quartile	Median	Upper quartile	Max
About the practice							
Q1 Opening hours satisfaction	64	69	23	64	68	73	92
Q2 Telephone access	61	62	13	53	63	71	92
Q3 Appointment satisfaction	59	68	23	63	68	74	92
Q4 See practitioner within 48hrs	38	62	18	54	62	70	96
Q5 See practitioner of choice	42	58	22	48	57	65	95
Q6 Speak to practitioner on phone	53	61	25	54	61	67	92
Q7 Comfort of waiting room	67	66	27	60	66	71	90
Q8 Waiting time	46	56	25	50	56	62	90
About the practitioner							
Q9 Satisfaction with visit	69	80	41	76	81	85	97
Q10 Warmth of greeting	69	82	45	78	82	86	96
Q11 Ability to listen	69	82	46	78	83	87	97
Q12 Explanations	69	81	42	77	81	85	97
Q13 Reassurance	68	79	41	75	80	84	98
Q14 Confidence in ability	71	82	43	79	83	87	99
Q15 Express concerns/fears	67	80	45	76	81	85	96
Q16 Respect shown	72	84	49	80	85	88	98
Q17 Time for visit	67	79	38	75	80	84	96
Q18 Consideration	67	79	41	75	79	83	98
Q19 Concern for patient	67	80	43	76	80	84	97
Q20 Self care	67	79	38	75	79	83	97
Q21 Recommendation	69	81	41	78	82	86	99
About the staff							
Q22 Reception staff	74	76	29	72	77	81	96
Q23 Respect for privacy/confidentiality	71	76	43	72	76	80	96
Q24 Information of services	69	73	29	68	73	77	96
Finally							
Q25 Complaints/compliments	62	66	31	62	66	70	96
Q26 Illness prevention	64	69	34	64	68	72	96
Q27 Reminder systems	64	68	27	63	68	72	96
Q28 Second opinion / comp medicine	62	67	30	62	67	71	96
Overall score	64	73	35	69	73	77	95

Your mean score for this question falls in the highest 25% of all means
 Your mean score for this question falls in the middle 50% of all means
 Your mean score for this question falls in the lowest 25% of all means

*Based on data from 927 practices carrying out 1,326 surveys between April 2010 and March 2013 with 25 or more responses. Please note the reliability of your patient feedback may be marginally reduced if less than 25 patient ratings per question is achieved (see table 1). In the event that there are less than 5 patient responses for any question, the corresponding score will not be illustrated. Please see the supporting documents at the end of this report for percentage score calculation and quartile information.

Graph 1: Your mean percentage scores in ascending order of performance with benchmark mean scores from all participating practices



Your patient feedback

Table 3: Mean percentage scores and benchmarks by practice list size (4001-6000 patients)

	Your mean score (%)	Benchmark data (%)*					
		National mean score	Min	Lower quartile	Median	Upper quartile	Max
About the practice							
Q1 Opening hours satisfaction	64	69	50	65	69	73	88
Q2 Telephone access	61	65	29	58	66	73	86
Q3 Appointment satisfaction	59	69	45	64	70	75	89
Q4 See practitioner within 48hrs	38	63	31	55	63	71	89
Q5 See practitioner of choice	42	59	32	51	60	66	87
Q6 Speak to practitioner on phone	53	61	35	55	61	68	86
Q7 Comfort of waiting room	67	66	42	60	66	72	86
Q8 Waiting time	46	55	26	49	56	61	83
About the practitioner							
Q9 Satisfaction with visit	69	80	59	76	81	85	93
Q10 Warmth of greeting	69	82	62	78	83	87	94
Q11 Ability to listen	69	82	61	78	83	87	94
Q12 Explanations	69	81	61	77	81	86	92
Q13 Reassurance	68	79	59	75	80	84	92
Q14 Confidence in ability	71	82	62	78	83	87	93
Q15 Express concerns/fears	67	80	59	76	81	85	92
Q16 Respect shown	72	84	64	80	85	88	94
Q17 Time for visit	67	79	56	75	80	84	91
Q18 Consideration	67	79	58	75	80	84	91
Q19 Concern for patient	67	79	57	75	80	84	91
Q20 Self care	67	78	58	74	79	84	90
Q21 Recommendation	69	81	59	77	82	86	92
About the staff							
Q22 Reception staff	74	77	58	73	78	81	91
Q23 Respect for privacy/confidentiality	71	76	58	73	77	80	91
Q24 Information of services	69	73	55	69	74	77	90
Finally							
Q25 Complaints/compliments	62	66	43	62	68	71	85
Q26 Illness prevention	64	69	47	65	70	73	87
Q27 Reminder systems	64	68	44	64	69	73	86
Q28 Second opinion / comp medicine	62	67	45	63	68	72	86
Overall score	64	73	53	70	74	78	88

Your mean score for this question falls in the highest 25% of all means
 Your mean score for this question falls in the middle 50% of all means
 Your mean score for this question falls in the lowest 25% of all means

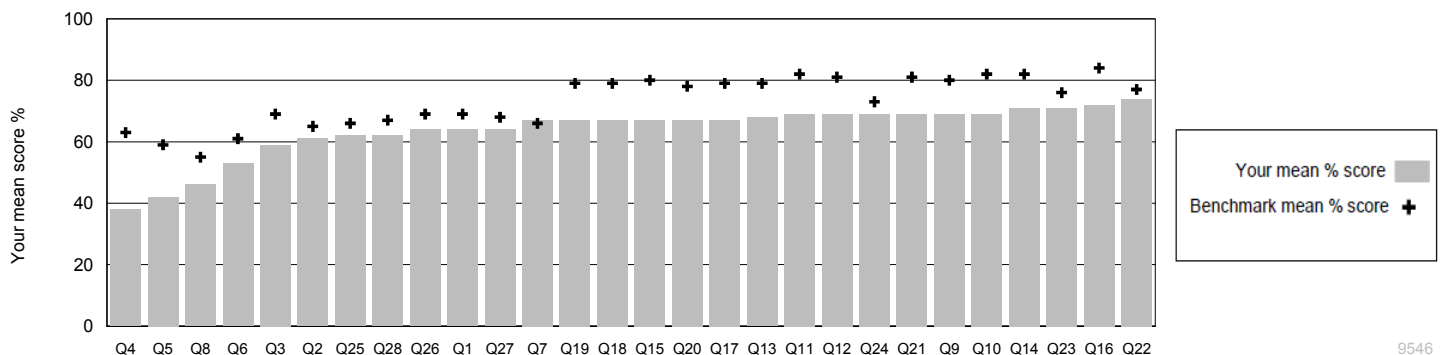
9546

*Based on data from 184 practices carrying out 263 surveys between April 2010 and March 2013 with 25 or more responses.

Please note the reliability of your patient feedback may be marginally reduced if less than 25 patient responses per question is achieved. In the event that there are less than 5 patient responses for any question, this score will not be illustrated.

See the supporting documents at the end of this report for percentage score calculation and quartile information.

Graph 2: Your mean percentage scores in ascending order of performance with benchmark mean scores by list size (4001-6000 patients)



9546

Your patient feedback

Table 4: Your patient demographics

Number of patient responses by category, your mean percentage scores and benchmarks by practice list size (4001-6000 patients)

	Number of responses	Your mean score (%)	Benchmark data (%)*					
			National mean score (%)	Minimum	Lower Quartile	Median	Upper Quartile	Maximum
Age								
Under 25	17	64	71	46	65	71	76	90
25 - 59	90	64	73	52	68	74	78	87
60 +	73	65	75	51	72	76	79	89
Blank	15	55	71	39	66	72	76	100
Gender								
Female	108	65	73	53	70	74	78	89
Male	68	65	74	52	70	75	79	87
Blank	19	55	72	44	66	72	78	98
Visit usual practitioner								
Yes	108	65	75	57	72	76	80	90
No	56	64	70	48	65	70	75	88
Blank	31	58	72	48	67	72	77	93
Years attending								
< 5 years	27	67	73	52	68	73	78	94
5 - 10 years	8	62	72	52	68	74	78	87
> 10 years	139	64	74	53	71	75	78	91
Blank	21	57	71	43	66	71	78	92

*Based on data from 184 practices carrying out 263 surveys between April 2010 and March 2013 with 25 or more responses.

Demographic category mean percentage scores are calculated from all the ratings from all questions for that demographic group.

Please note the reliability of your patient feedback may be marginally reduced if less than 25 patient ratings per category is achieved. In the event that there are less than 5 patient responses for any question, the corresponding score will not be illustrated.

Please see the supporting documents at the end of this report for percentage score calculation and quartile information.

954€

Your patient feedback

Table 5: Your current and previous mean percentage scores*

	Current scores	29/01/2015	29/01/2014	19/02/2013
Q1 Opening hours satisfaction	64	65	67	68
Q2 Telephone access	61	61	63	65
Q3 Appointment satisfaction	59	63	67	64
Q4 See practitioner within 48hrs	38	47	51	50
Q5 See practitioner of choice	42	48	49	49
Q6 Speak to practitioner on phone	53	52	53	51
Q7 Comfort of waiting room	67	62	66	66
Q8 Waiting time	46	46	52	42
Q9 Satisfaction with visit	69	69	74	73
Q10 Warmth of greeting	69	68	72	72
Q11 Ability to listen	69	68	75	74
Q12 Explanations	69	69	76	74
Q13 Reassurance	68	68	74	72
Q14 Confidence in ability	71	71	77	74
Q15 Express concerns/fears	67	67	74	72
Q16 Respect shown	72	71	76	75
Q17 Time for visit	67	67	74	73
Q18 Consideration	67	66	72	70
Q19 Concern for patient	67	65	72	70
Q20 Self care	67	65	72	70
Q21 Recommendation	69	68	76	72
Q22 Reception staff	74	71	76	76
Q23 Respect for privacy/confidentiality	71	69	75	72
Q24 Information of services	69	69	73	69
Q25 Complaints/compliments	62	62	65	63
Q26 Illness prevention	64	62	66	65
Q27 Reminder systems	64	62	66	66
Q28 Second opinion / comp medicine	62	58	65	64
Overall score	64	64	69	67

Your patient feedback

All written patient comments have been included in their entirety but details which could identify a specific patient have been removed to ensure anonymity.

Any comments about how this practice could improve its service?

- Give two doctors training into how to treat patients.
- I have only recently joined this practice and have absolutely no complaints - fantastic service! Lovely staff on reception and doctors/nurses are great!
- Always happy with the doctors, nurses and all.
- Two doctors are very understandable and listen to your problems.
- To see my doctor not sent to the hospital.
- Wider chairs.
- When you are being seen by a particular doctor then phone for advice, i.e. on a reaction to medication, a different doctor should not ring you back as they don't know the situation.
- When having seen a doctor and told to make an appointment for two weeks time you can't do this as the system doesn't go that far in front.
- Listen.
- Stop sending us all to the Access Centre in Workington Hospital. We need to see our own doctors at least once in a year!
- I struggle to make appointments as cannot access phone after 8.30.
- I have tick fair on all but it sometime depends on which doctor you see some are better than others.
- Keep to appointment times. Twice I had to wait over half an hour.
- Excellent.
- Appointment 13 minutes late.
- None, I have always found this practice and the staff very helpful, and I have been a patient with this practice for many years.
- Pleasanter nursing staff.
- I cannot fault it.
- Happy with service.
- When contacting practice by phone it often disconnects and have to redial, sometimes more than once, each time I have reported this.
- It would be helpful for deaf patients if all doctors' names came up on the screen in the waiting room.
- I think it ok as it is now.
- Get doctor to ring patients when they ask for the doctor to as this did not happen in my case.
- No I have been coming to this surgery for years and I have always loved it at Orchard House. Thank you.
- Keeping to appointment times as it seems I never get seen at the time arranged.
- Satisfactory.
- We have the best practice in Workington can't improve on anything that already is excellent.
- Reception staff are first class.

Your patient feedback

All written patient comments have been included in their entirety but details which could identify a specific patient have been removed to ensure anonymity.

Any comments about how the doctor/nurse could improve?

- One of the doctors is the worst doctor I've ever seen they do not listen and are very nasty.
- Nurses are great.
- Take time to talk to and listen to patients.
- Saying that one appointment one symptom as several symptoms could lead to one diagnosis.
- Happy.
- Seems ok as it is.
- Satisfactory.

Supporting documents

Supporting documents

Details of score calculation

The score provided for each question in this questionnaire is the mean (average) value of all of the ratings from all patients who completed the question. It is expressed as a percentage - so the best possible score is 100%.

Example using data from your Q1 Opening hours satisfaction

Total number of patients responses = 195

Questionnaire rating scale	Poor	Fair	Good	Very Good	Excellent	Blank/spoilt
Number of ratings	3	12	84	64	31	1

Value assigned to each rating	0	25	50	75	100	n/a

$$\frac{(\text{number of Poor ratings} \times 0) + (\text{number of Fair ratings} \times 25) + (\text{number of Good ratings} \times 50) + (\text{number of Very Good ratings} \times 75) + (\text{number of Excellent ratings} \times 100)}{(\text{Total number of patient responses} - \text{number of blank/spoilt})} = \frac{(3 \times 0) + (12 \times 25) + (84 \times 50) + (64 \times 75) + (31 \times 100)}{(195 - 1)} = 12,400/194$$

Your mean percentage score for Q1 = 64%

Explanation of quartiles

In statistics a quartile is any one of the three values that divide data into four equal parts, each part represents ¼ of the sampled population.

Quartiles comprise:

Lower quartile, below which lies the lowest 25% of the data

The median, cuts the data set in half

Upper quartile, above which lies the top 25% of the data

Please note that the benchmarks presented in this report are based on data obtained from a volunteer sample of practices, and as such may be artificially high.

Question	Your mean score (%)
Q1 Opening hours satisfaction	64

Benchmark data (%)*				
Min	Lower quartile	Median	Upper quartile	Max
23	64	68	73	92

9541

*Based on data from 927 practices carrying out 1,326 surveys between April 2010 and March 2013 with 25 or more responses.

Supporting documents

Page by page guide to the interpretation of your report

Page 1

The frequency distribution table (table 1) shows the number of patient ratings from poor to excellent and the number of 'blank/spoilt' responses for every question (a blank response is where a patient did not respond to the question and a spoilt response is where more than one tick box option was chosen or if the questionnaire was defaced). If these values are added up, for any one question, this will equate to the total number of patients surveyed (shown in the top right hand corner of the page). This table clearly shows the degree of satisfaction patients have with each aspect of the practice considered. Please note the spread of the ratings. Are they widely spread or closely packed around one or two specific ratings? One or two higher or lower ratings can make a big difference to your mean percentage scores illustrated in tables 2 and 3.

Page 2

The mean percentage score and benchmark table (table 2) illustrates your mean percentage scores for each question calculated from the data in table 1. Each score is the mean (average) score calculated from valid patient ratings (i.e. not the blank/spoilt responses) expressed as a percentage (see score calculation sheet also in the supporting document section of your report). It has been established by our statisticians that the reliability of your patient feedback for any one question may be marginally reduced if less than 25 valid patient responses is achieved (this number can be determined from table 1). In the event that there are less than 5 patient responses, the corresponding score for the question will not be illustrated.

Your scores have been displayed in colour coded boxes to indicate how your score falls within the benchmark data (within the highest 25%, the middle 50% or the lowest 25% of all the mean percentage scores achieved by all practices in the benchmark sample). The provenance of the benchmark data is provided in the footer below the table.

Graph 1 illustrates your mean percentage scores in ascending order of performance with benchmark means from all participating practices.

Page 3

Table 3 and graph 2 are the same as for page 2, but with benchmarks provided relevant to your practice list size. Evidence indicates that practices with smaller list sizes tend to perform better than those with larger list sizes.

Page 4

Table 4 shows the number of patient responses from each 'demographic' group detailed on the questionnaire i.e. age, gender, if the patient saw their usual practitioner or not and the number of years attending the practice. Demographic category mean percentage scores are calculated from all the ratings from all questions for that demographic group. Associated benchmark mean scores relevant to your practice list size are also provided.

The same criteria concerning reliability of the feedback as explained in Page 2 above applies.

Page 5

Table 5 lists your current scores for each question together with scores from your last 3 surveys (if applicable) for comparison.

Page 6

Patient comments usually reflect scores achieved. The IPQ was designed to simulate the patient's chronological journey through their visit to the practice. Although the questions in the IPQ are generic, comments can pinpoint specific issues identified by the patient from any part of this journey. If there is a particular problem within the practice e.g. getting through in the morning on the telephone or the lack of chairs in the waiting room suitable for the elderly, this can be clearly picked up in the themes and frequency of comments.

In order to ensure patient anonymity, any personal identifiers are removed. In the unlikely event that we receive a written comment which might relate to serious professional misconduct (e.g. allegations of sexual assault), the comment would be referred to our Clinical Associate who would discuss the matter with you.

Improving Practice Questionnaire



OFFICE USE ONLY	Org ID
	Survey ID
	Practitioner ID

You can help this general practice improve its service

- This practice would welcome your honest feedback
- Please read and complete this survey after you have seen the
- All the information provided by patients is put together in a report for the practice. Your answers will not be identifiable. Any comments you make will be included but all attempts will be made to remove information that could identify you.
- Once completed, please return this survey to reception in the envelope provided

Please mark the box like this with a blue or black ball-point pen. If you change your mind just cross out your old response and make your new choice.

When giving your feedback, please only consider the consultation you have had today.

About the practice

	Poor	Fair	Good	Very good	Excellent
1 Your level of satisfaction with the practice's opening hours	<input type="checkbox"/>	<input type="checkbox"/>	<input type="checkbox"/>	<input type="checkbox"/>	<input type="checkbox"/>
2 Ease of contacting the practice on the telephone	<input type="checkbox"/>	<input type="checkbox"/>	<input type="checkbox"/>	<input type="checkbox"/>	<input type="checkbox"/>
3 Satisfaction with the day and time arranged for your appointment	<input type="checkbox"/>	<input type="checkbox"/>	<input type="checkbox"/>	<input type="checkbox"/>	<input type="checkbox"/>
4 Chances of seeing a doctor/nurse within 48 hours	<input type="checkbox"/>	<input type="checkbox"/>	<input type="checkbox"/>	<input type="checkbox"/>	<input type="checkbox"/>
5 Chances of seeing a doctor/nurse of <u>your</u> choice	<input type="checkbox"/>	<input type="checkbox"/>	<input type="checkbox"/>	<input type="checkbox"/>	<input type="checkbox"/>
6 Opportunity of speaking to a doctor/nurse on the telephone when necessary	<input type="checkbox"/>	<input type="checkbox"/>	<input type="checkbox"/>	<input type="checkbox"/>	<input type="checkbox"/>
7 Comfort level of waiting room (e.g. chairs, magazines)	<input type="checkbox"/>	<input type="checkbox"/>	<input type="checkbox"/>	<input type="checkbox"/>	<input type="checkbox"/>
8 Length of time waiting in the practice	<input type="checkbox"/>	<input type="checkbox"/>	<input type="checkbox"/>	<input type="checkbox"/>	<input type="checkbox"/>

About the doctor/nurse (*whom you have just seen*)

	Poor	Fair	Good	Very good	Excellent
9 My overall satisfaction with this visit to the doctor/nurse is	<input type="checkbox"/>	<input type="checkbox"/>	<input type="checkbox"/>	<input type="checkbox"/>	<input type="checkbox"/>
10 The warmth of the doctor/nurse's greeting to me was	<input type="checkbox"/>	<input type="checkbox"/>	<input type="checkbox"/>	<input type="checkbox"/>	<input type="checkbox"/>
11 On this visit I would rate the doctor/nurse's ability to really listen to me as	<input type="checkbox"/>	<input type="checkbox"/>	<input type="checkbox"/>	<input type="checkbox"/>	<input type="checkbox"/>
12 The doctor/nurse's explanations of things to me were	<input type="checkbox"/>	<input type="checkbox"/>	<input type="checkbox"/>	<input type="checkbox"/>	<input type="checkbox"/>
13 The extent to which I felt reassured by this doctor/nurse was	<input type="checkbox"/>	<input type="checkbox"/>	<input type="checkbox"/>	<input type="checkbox"/>	<input type="checkbox"/>
14 My confidence in this doctor/nurse's ability is	<input type="checkbox"/>	<input type="checkbox"/>	<input type="checkbox"/>	<input type="checkbox"/>	<input type="checkbox"/>
15 The opportunity the doctor/nurse gave me to express my concerns or fears was	<input type="checkbox"/>	<input type="checkbox"/>	<input type="checkbox"/>	<input type="checkbox"/>	<input type="checkbox"/>
16 The respect shown to me by this doctor/nurse was	<input type="checkbox"/>	<input type="checkbox"/>	<input type="checkbox"/>	<input type="checkbox"/>	<input type="checkbox"/>
17 The amount of time given to me for this visit was	<input type="checkbox"/>	<input type="checkbox"/>	<input type="checkbox"/>	<input type="checkbox"/>	<input type="checkbox"/>

Please turn over ↶



About the doctor/nurse (continued....)

		Poor	Fair	Good	Very good	Excellent
18	This doctor/nurse's consideration of my personal situation in deciding a treatment or advising me was	<input type="checkbox"/>	<input type="checkbox"/>	<input type="checkbox"/>	<input type="checkbox"/>	<input type="checkbox"/>
19	The doctor/nurse's concern for me as a person on this visit was	<input type="checkbox"/>	<input type="checkbox"/>	<input type="checkbox"/>	<input type="checkbox"/>	<input type="checkbox"/>
20	The extent to which the doctor/nurse helped me to take care of myself was	<input type="checkbox"/>	<input type="checkbox"/>	<input type="checkbox"/>	<input type="checkbox"/>	<input type="checkbox"/>
21	The recommendation I would give to my friends about this doctor/nurse would be	<input type="checkbox"/>	<input type="checkbox"/>	<input type="checkbox"/>	<input type="checkbox"/>	<input type="checkbox"/>

About the staff

		Poor	Fair	Good	Very good	Excellent
22	The manner in which you were treated by the reception staff	<input type="checkbox"/>	<input type="checkbox"/>	<input type="checkbox"/>	<input type="checkbox"/>	<input type="checkbox"/>
23	Respect shown for your privacy and confidentiality	<input type="checkbox"/>	<input type="checkbox"/>	<input type="checkbox"/>	<input type="checkbox"/>	<input type="checkbox"/>
24	Information provided by the practice about its service (e.g. repeat prescriptions, test results, cost of private certificates etc)	<input type="checkbox"/>	<input type="checkbox"/>	<input type="checkbox"/>	<input type="checkbox"/>	<input type="checkbox"/>

Finally

		Poor	Fair	Good	Very good	Excellent
25	The opportunity for making compliments or complaints to this practice about its service and quality of care	<input type="checkbox"/>	<input type="checkbox"/>	<input type="checkbox"/>	<input type="checkbox"/>	<input type="checkbox"/>
26	The information provided by this practice about how to prevent illness and stay healthy (e.g. alcohol use, health risks of smoking, diet habits etc)	<input type="checkbox"/>	<input type="checkbox"/>	<input type="checkbox"/>	<input type="checkbox"/>	<input type="checkbox"/>
27	The availability and administration of reminder systems for ongoing health checks is	<input type="checkbox"/>	<input type="checkbox"/>	<input type="checkbox"/>	<input type="checkbox"/>	<input type="checkbox"/>
28	The practice's respect of your right to seek a second opinion or complementary medicine was	<input type="checkbox"/>	<input type="checkbox"/>	<input type="checkbox"/>	<input type="checkbox"/>	<input type="checkbox"/>

Any comments about how this **practice** could improve its service?

Any comments about how the doctor/nurse could improve?

The following questions provide us only with general information about the range of people who have responded to this survey. No one at the practice will be able to identify your personal responses.

<p>How old are you in years?</p> <p><input type="checkbox"/> Under 25</p> <p><input type="checkbox"/> 25-59</p> <p><input type="checkbox"/> 60+</p>	<p>Are you:</p> <p><input type="checkbox"/> Female</p> <p><input type="checkbox"/> Male</p>	<p>Was this visit with your usual clinician?</p> <p><input type="checkbox"/> Yes</p> <p><input type="checkbox"/> No</p>	<p>How many years have you been attending this practice?</p> <p><input type="checkbox"/> Less than 5 years</p> <p><input type="checkbox"/> 5-10 years</p> <p><input type="checkbox"/> More than 10 years</p>
---	---	---	--

Thank you for your time and assistance

Certificate of Completion

This is to certify that

Orchard House Surgery

South William Street
Workington
Cumbria
CA14 2ED

Practice List Size: 5550

Surveys Completed: 195

has completed the

Improving Practice Questionnaire

Completed November 2015



Michael Greco
Director



Thank you to all patients who participated in this survey.
By letting the practice know your views, positive changes can be made for the benefit of all patients.